



K O R S E N G I N E E R I N G

2805 Pontiac Lake Rd
Suite 2B
Waterford, MI 48328
Phone: (248) 706-1540
Fax: (248) 706-1002

twitter



Niagara AX Twitter Module Documentation

Version 1.0
8/19/2009

1. INSTALLATION

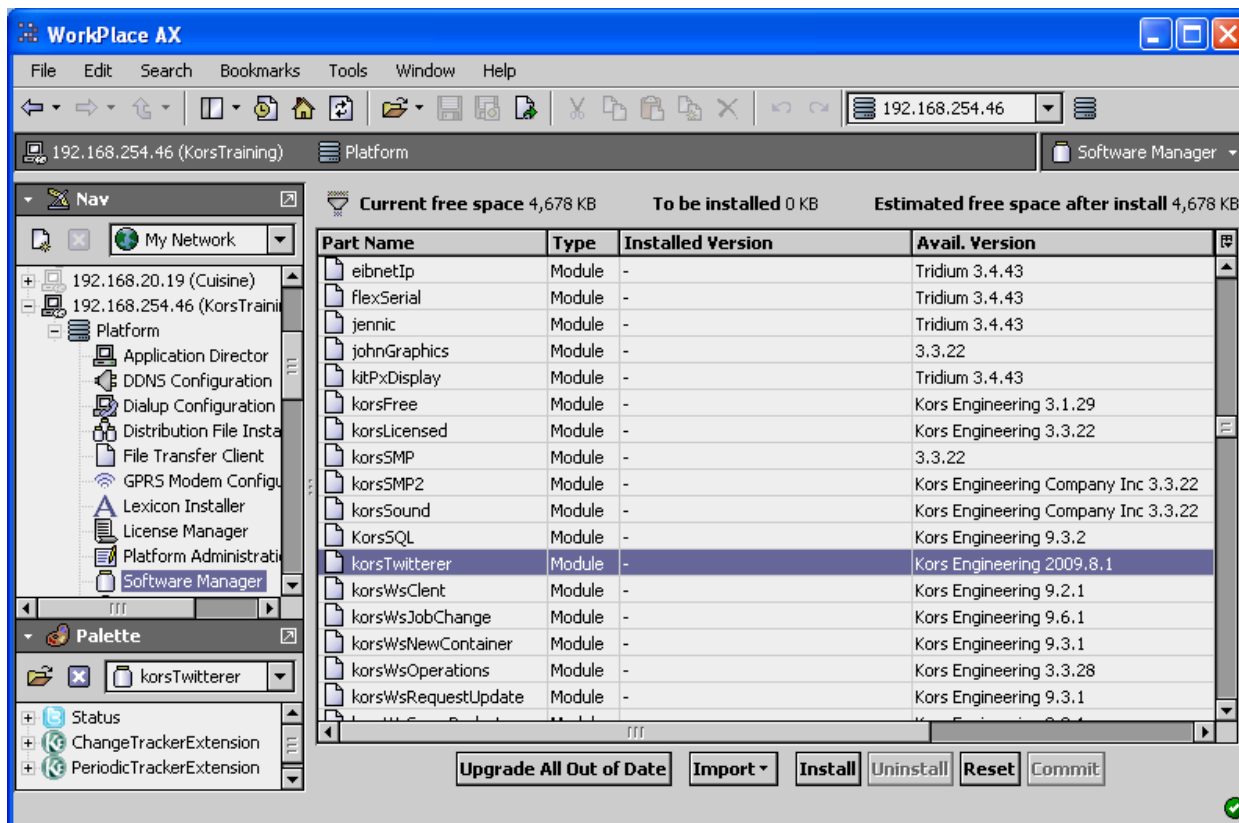
Installing the korsTwitterer module is done using the Niagara WorkPlace AX tool. There are two files required for installation, the “jar” file that contains the korsTwitterer module, and the license file provided by Kors Engineering when you purchased the software (optional, demo mode is used if no license file is present).

1.1 OBTAIN THE MODULE

The first step in the installation is to obtain the [korsTwitterer.jar](#) file from the Kors Engineering website. Save this file on the computer running the WorkPlace AX software in the “modules” folder in your Niagara installation directory. For example, the default installation directory for AX 3.4.43 would be C:\niagara\niagara-3.4.43\modules. Once you have saved the file, you will have to restart WorkPlace AX for it to find the new file.

1.2 COPY THE MODULE TO YOUR JACE

To deploy this file to running Niagara AX Jace units, use WorkPlace AX to connect to the Platform of the appropriate Jace. Use the Software Manager tool to install the korsTwitterer module:

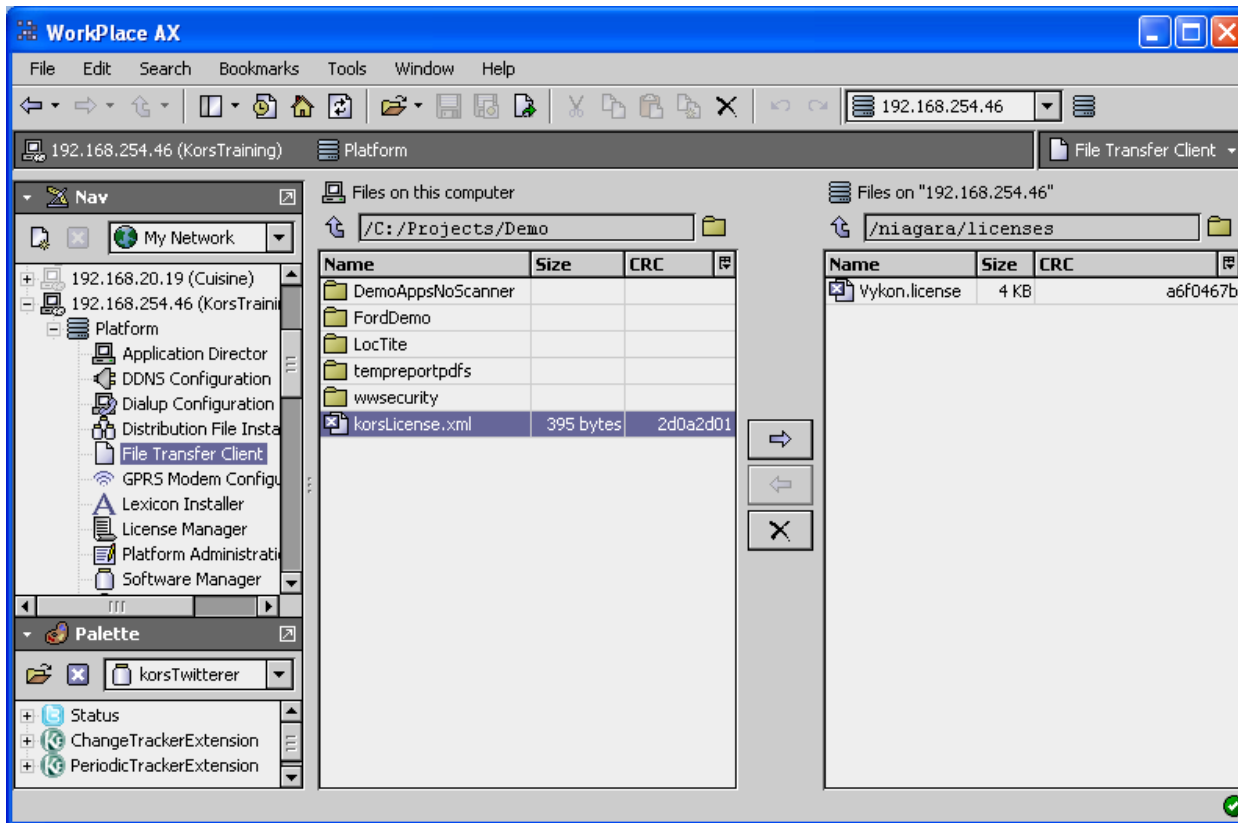


You will have to restart the Jace once the module is installed.

1.3 LICENSE YOUR JACE

If you purchased a license for the module, you should have been emailed a korsLicense.xml file. Each Jace requires a unique license file, so it is important have the correct license file for each Jace. The license file is based on the Host ID of your Jace unit. The file is a simple text file, so if you need to find out which Jace a file is for, open it with notepad and the Host ID will be listed inside the file.

To license a particular Jace, connect to the Platform of the Jace using the WorkPlace AX software. Use the File Transfer Client to copy the correct korsLicense.xml file to the /niagara/licenses folder in your Jace. You should restart your Jace for the new license to be recognized.



2. BEFORE YOU CAN TWEET

The korsTwitterer requires one or more Twitter accounts to post data to. If you are not familiar with Twitter, there is a tremendous amount of information on the Internet about it. One main thing to remember is a Twitter account requires a unique email address – you cannot have more than one account with the same email address. So, go to www.twitter.com and create an account you would like to post your tweets to. When setting up the account, one key choice to make is whether or not to make the account public. In the twitter Settings/Account page, there is a checkbox that reads “Protect my tweets”. If enabled, your posts will not be viewable by anyone who is not approved to see them.

Once your account is set up, you can begin to tweet with Niagara. When you created the account, you set up a username and password – you will need these in the Niagara objects.

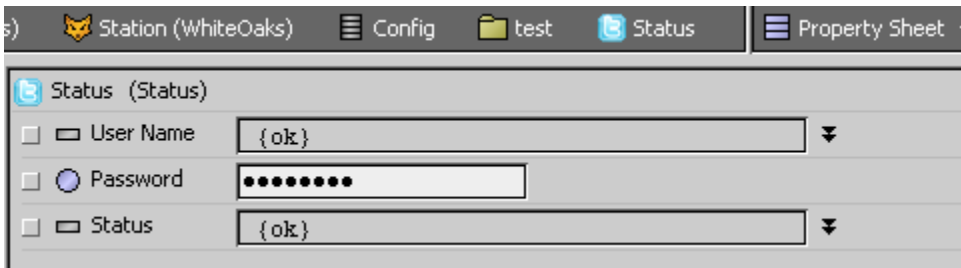


3. USING THE COMPONENTS

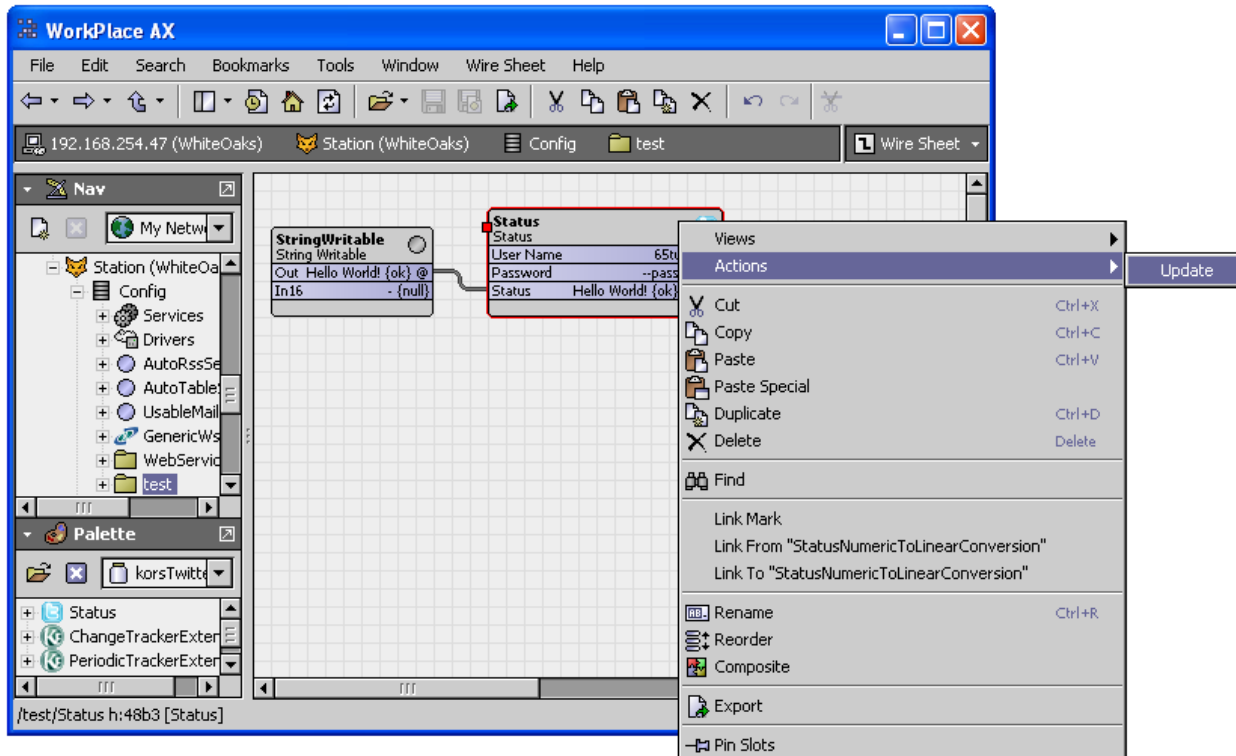
To begin, connect to your jace using either the WorkPlace AX tool, or using a browser and the Web Workbench. You should have a new Palette available, use the “Open” button in the palette toolbox and choose korsTwitterer. There are three components available, the Status object, the ChangeTrackerExtension and the PeriodicTrackerExtension.

3.1 THE STATUS OBJECT

The simplest of the Twitter components is the Status object. It is meant to be used as a standalone object on a wiresheet. To create one, drag it from the Palette to the desired worksheet. Once created, double clicking on the object will open the Properties view:



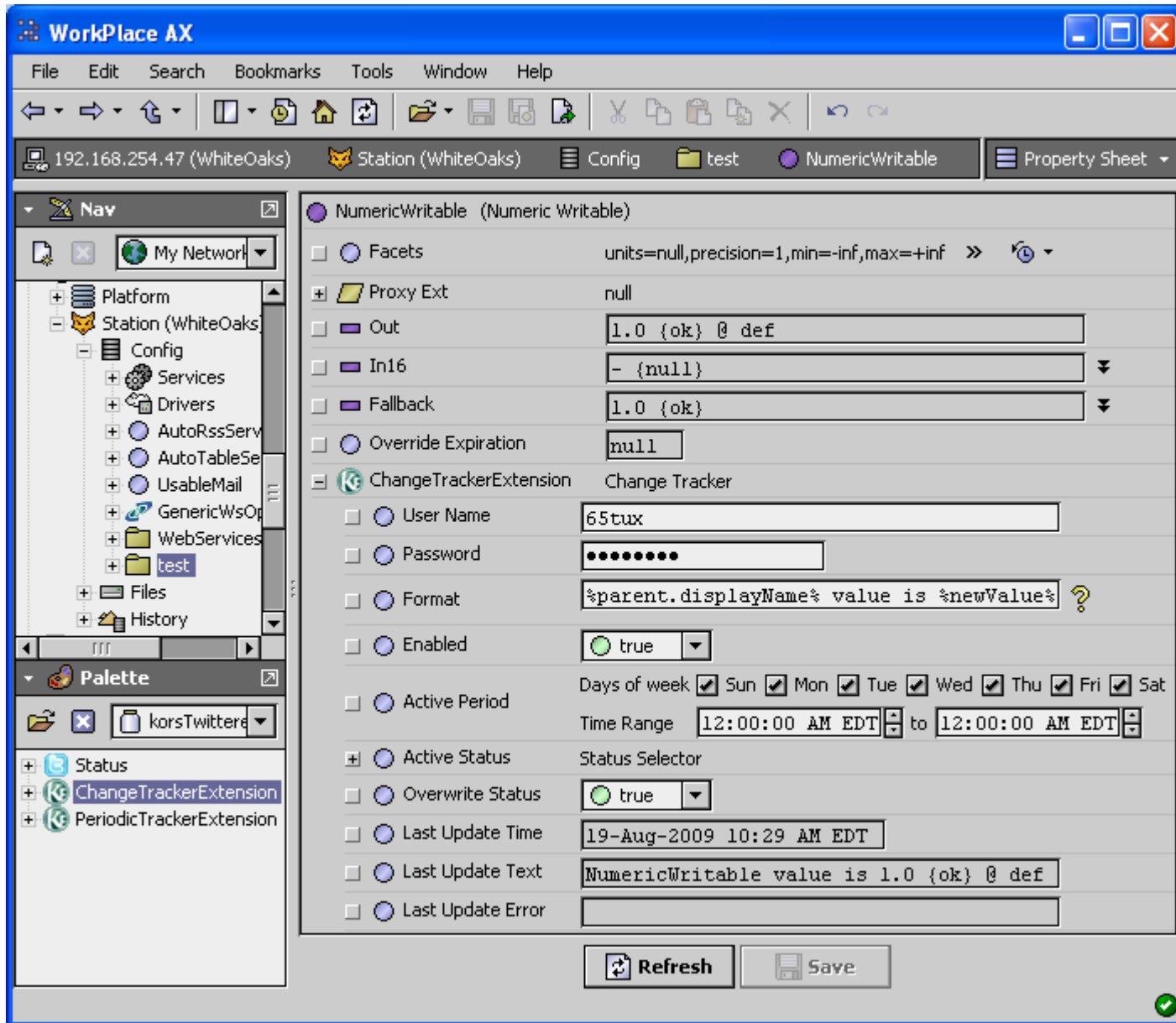
This object requires four things, a User Name, a Password, as Status String to tweet and an Update trigger action. To use the object, fill in your Twitter account username and password, then link a StringWriteable object to the Status slot.



Once created, you can manually perform the “Update” action, or link the action to other logic in your Station. That’s it!

3.2 THE CHANGE TRACKER EXTENSION

The ChangeTrackerExtension is available in the korsTwitterer Palette. This object is meant to be added to an existing Niagara data point object. It is used to send a tweet whenever the output value of the “parent” object changes. Functionally, the object works like a History or Alarm extension in Niagara. To use the object, first open the Properties view of the point you would like to add the extension to. Then from the korsTwitterer Palette, drag the extension onto the point.





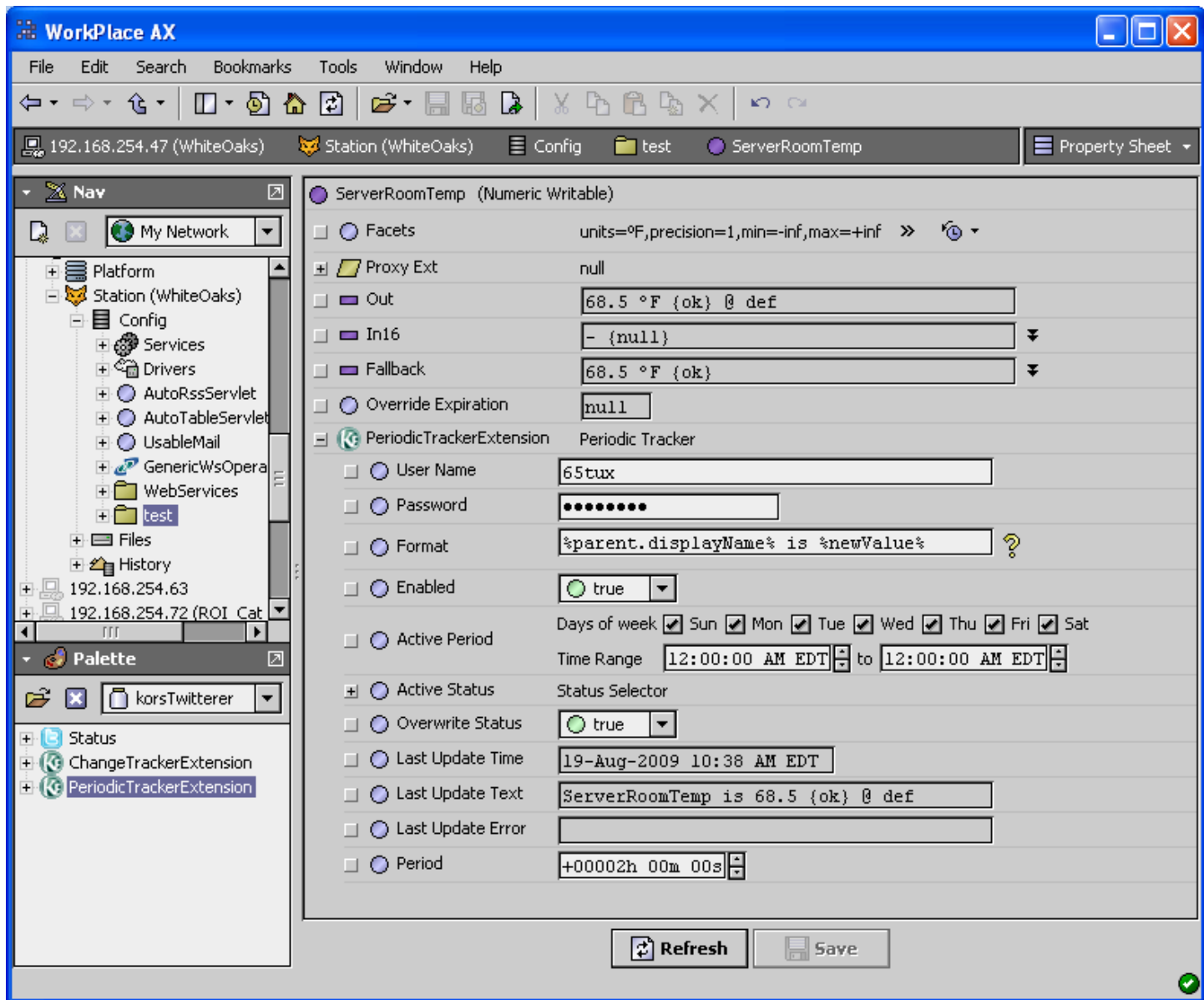
In the above example, a NumericWriteable is used as the “parent”. The fields shown on the property page are:

Field Name	Description
User Name	Supply the Twitter account username
Password	Supply the Twitter account password
Format	Create the message you would like to post. If you are not familiar with the Niagara formatting syntax, search the Niagara Central forums for examples and documentation. For this object, use %newValue% or %newValue.value% to embed the parent point in the status message.
Enabled	Must be set to true to send tweets
Active Period	Can be used to limit the times and days of the week to post tweets
Active Status	Can be use to limit the point statuses that will post tweets
Overwrite Status	When true, each new tweet will delete and replace the previous one for this extension. When false, each tweet will create a new entry in your Twitter timeline and old tweets will remain.
Last Update Time	Time and date of the last successful tweet
Last Update Text	Content of the last successful tweet
Last Update Error	If an error occurred on the last tweet attempt, the error message will appear here

One word of caution, Twitter can limit the traffic volume for an account. Anything over 100 tweets per hour per account can be flagged and may lead to accounts being disabled. Use the ChangeTrackerExtension wisely!

3.3 THE PERIODIC TRACKER EXTENSION

Similar to the Change Tracker Extension, the Periodic Tracker Extension must be added to an existing Niagara point object to function. It is used to send tweets at specific time intervals containing the value of the parent point.



All setup fields for the Periodic Tracker are the same as for the Change Tracker, with one new field, the “Period”. Use this field to set the interval at which the object will post new tweets. Use the same caution as for the Change Tracker, too many tweets per hour can get an account disabled!